

Flowerbed I - Overview

This flowerbed would be ideal next to the house or with a fence or hedge directly behind it. The best location for this flowerbed would be in a sunny spot (on the south side of the house), in fertile soil with plenty of moisture. This flowerbed is very colorful and designed so there would be something flowering all through the season.

Spring starts with bulb flowers snowdrops and crocuses that can grow freely under shrubs. The pink daphne bush flowers early, as do tulips, bright yellow leopard's bane, pink bergenia and the long-flowering cushion spurge.

At the start of summer, the flowerbed will be colored by the long-flowering and generously blossoming catmint, dark green sage, fragrant large flowering calamint, large-bloom large flowering betony, tall and short white daisies and coral bells, which will be decorative all through the season thanks to their colorful leaves. In turn, the graceful, white bellflowers will be like little lights in the flowerbed. When the delphiniums start to flower, the flowerbed will have reached its peak. The clematis will add some color to the background of the garden. The second half of summer will be supplemented with the cream colored hydrangea bush and annual verbenas.

Fall will see the second blooming of the catmint and sage if they will have been trimmed after their first blossoming in summer. The yellow black-eyed Susans will be very vibrant, and the colorful sneezeweed will delight with its reddish brown and orange tones.

The trimmed bushes of boxwood and yew will stand out in the winter period. The evergreen leaves of bergenia will turn red after the first frosts and will retain the color until spring.



Spring



Summer



Autumn

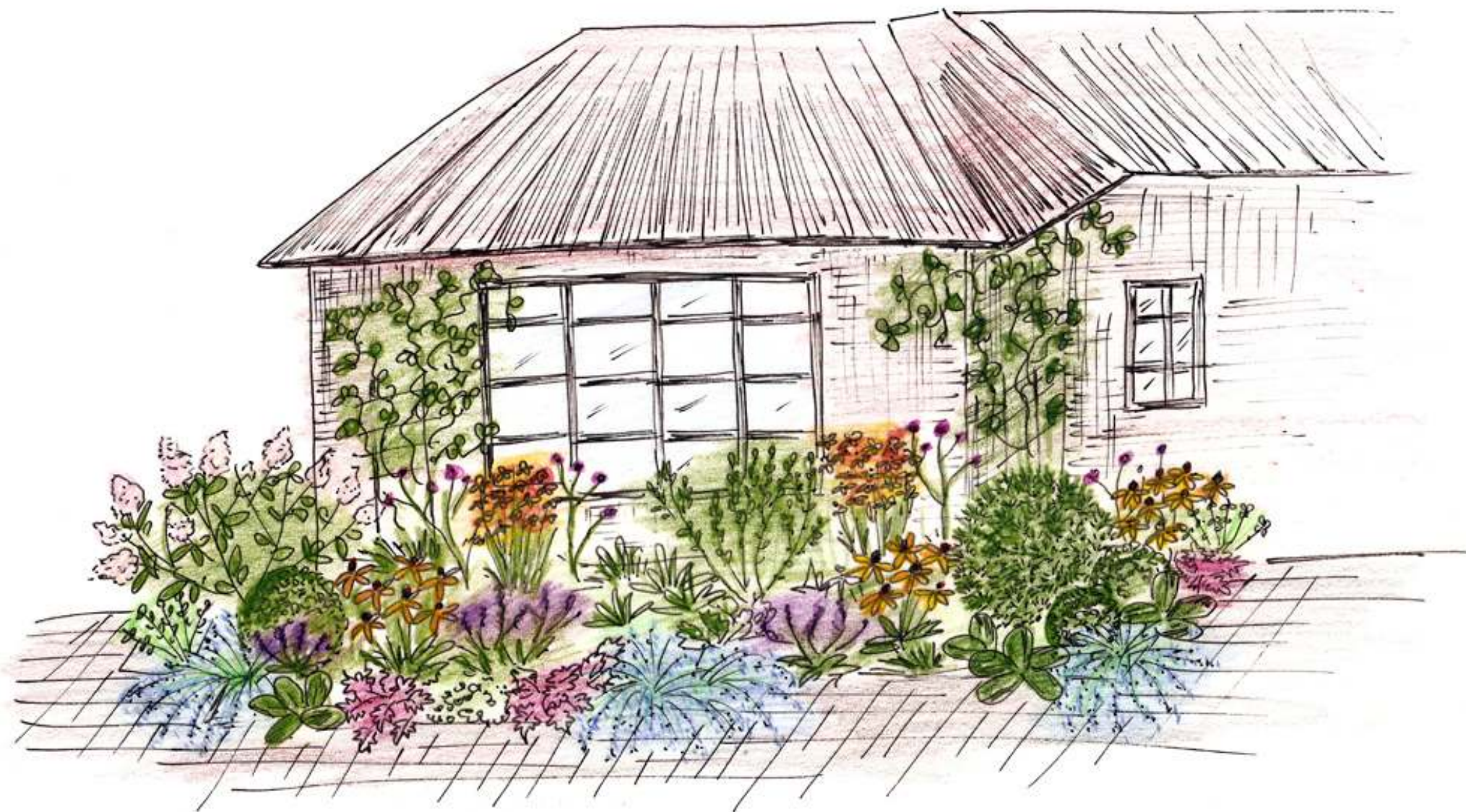
Flowerbed I - Spring



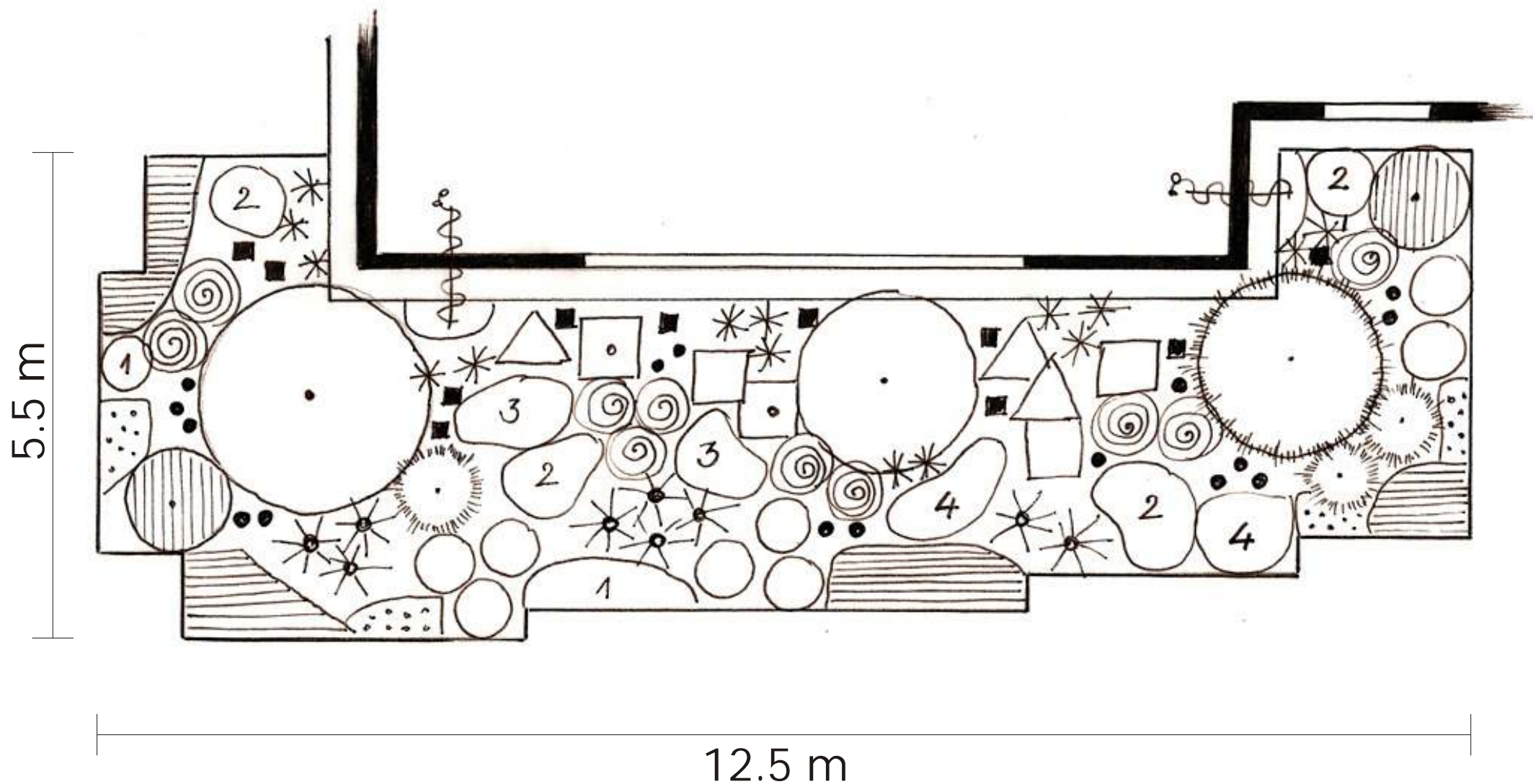
Flowerbed I - Summer



Flowerbed I - Autumn



Flowerbed I - Technical drawing



Flowerbed I - List of plants

-  - *Hydrangea paniculata* - 1 pcs.
-  - *Daphne mezereum* - 1 pcs.
-  - *Taxus baccata* (cirpta forma) - 1 pcs.
-  - *Buxus sempervirens* (cirpta forma) - 3 pcs.
-  - *Stachys grandiflora* 'Superba' - 10 pcs.
-  - *Doronicum orientale* 'Little Leo' - 15 pcs.
-  - *Helenium autumnale* 'Helena Rote Töne' - 3 pcs.
-  - *Delphinium Pacific* 'Black Knight' - 2 pcs.
-  - *Delphinium Pacific* 'Astolat' - 3 pcs.
-  - *Rudbeckia fulgida* var *sullivantii* 'Goldsturm' - 6 pcs.
-  - *Chrysanthemum maximum* 'Polaris' - 4 pcs.
-  - *Chrysanthemum maximum* 'Brightside' - 3 pcs.
-  - *Salvia x superba* 'Mainacht' - 9 pcs.
-  - *Euphorbia polychroma* - 2 pcs.
-  - *Nepeta x faassenii* 'Walkers Low' - 14 pcs.
-  - *Calamintha grandiflora* - 7 pcs.
-  - *Bergenia cordifolia* 'Winterglut' - 9 pcs.
-  - *Heuchera x hybrida* 'Prince of Silver'® - 8 pcs.
-  - *Campanula persicifolia* Grandiflora 'Alba' - 16 pcs.
-  - *Verbena bonarensis* (viengad ga) - 11 pcs.
-  - *Clematis* - 2 pcs.