

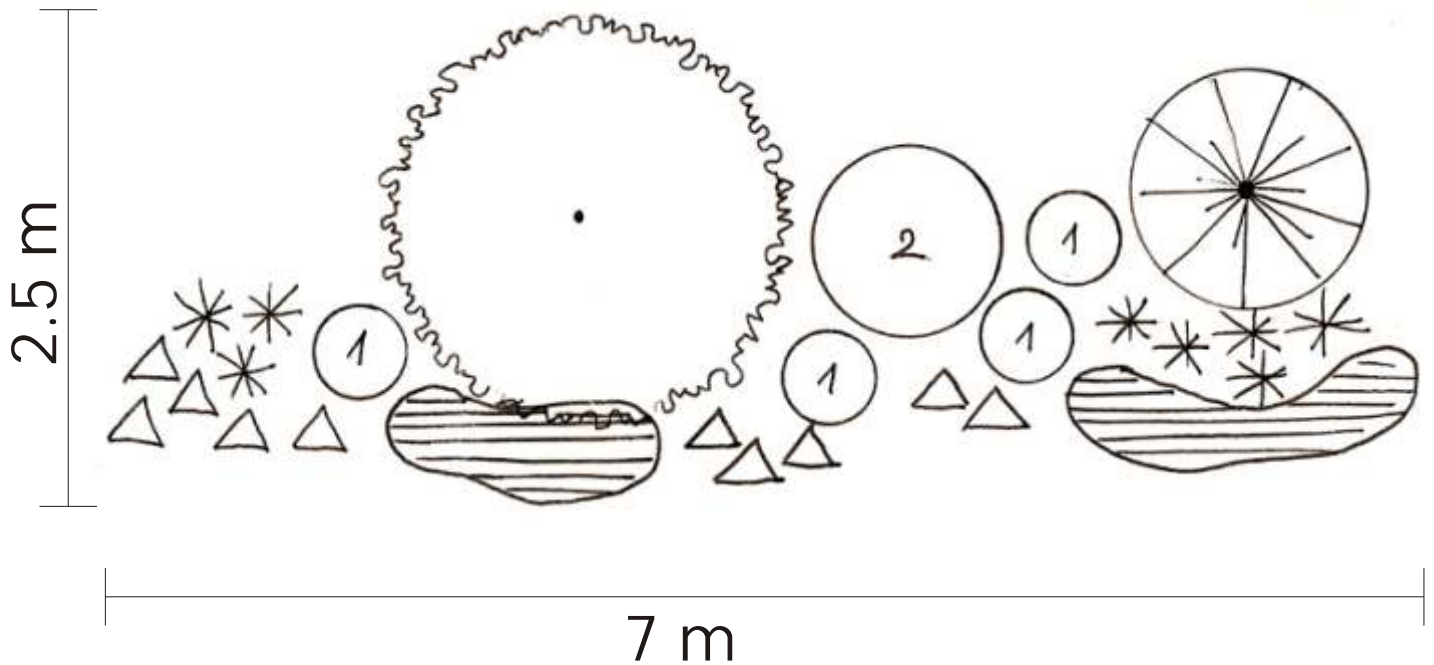
## Flowerbed II - Overview

As the main element of this flowerbed is the evergreen rhododendron bush, the rest of the plants must be shade tolerant as well. The best placement would be in a partial or full shade area with loose, acidic and fertile soil. Moderate level moisture is also necessary in this case.

In addition to the rhododendrons, you will be delighted by the soft and fragile foamflower blossoms. Foamflowers form a dense layer with their decorative foliage. Masterwort will start to bloom in summer, and the blue-green leaved 'Blue Angel' and vibrant white 'Patriot' hostas will certainly announce themselves with a burst of color. In fall the flowerbed will be dominated by the Chinese silver grass or the purple moor grass (depending on which one is planted); it saves its brilliance specifically for fall. In turn, the little shadow sedges will be decorative all through the season.



## Flowerbed II - Technical drawing



## Flowerbed II - List of plants



- Rhododendron 'Nova Zembla' - 1 pcs.



- Molinia vai Miscanthus - 1 pcs.



- Hosta sieboldiana 'Blue Angel' - 1 pcs.



- Hosta fortunei 'Patriot' - 4 pcs.



- Astrantia major 'Star of Royals'® - 8 pcs.



- Carex umbrosa 'The Beatles' - 10 pcs.



- Tiarella x hybrida 'Tiger Stripe' - 14 pcs.