

| -

() ,



1 -

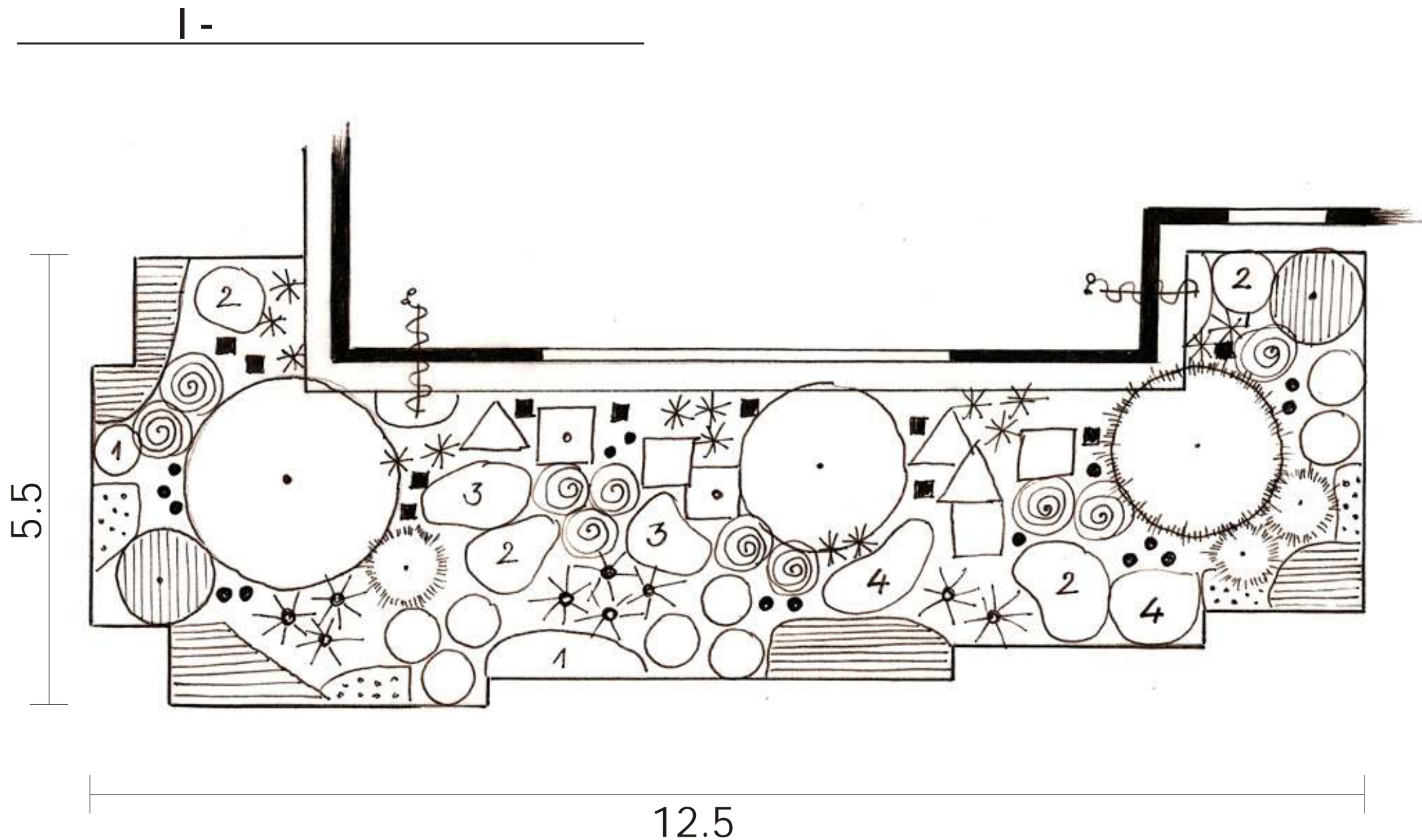


1 -





1 -





I -

-  - *Hydrangea paniculata* - 1 .
-  - *Daphne mezereum* - 1 .
-  - *Taxus baccata* (cirpta forma) - 1 .
-  - *Buxus sempervirens* (cirpta forma) - 3 .
-  - *Stachys grandiflora* 'Superba' - 10 .
-  - *Doronicum orientale* 'Little Leo' - 15 .
-  - *Helenium autumnale* 'Helena Rote Töne' - 3 .
-  - *Delphinium Pacific* 'Black Knight' - 2 .
-  - *Delphinium Pacific* 'Astolat' - 3 .
-  - *Rudbeckia fulgida* var *sullivantii* 'Goldsturm' - 6 .
-  - *Chrysanthemum maximum* 'Polaris' - 4 .
-  - *Chrysanthemum maximum* 'Brightside' - 3 .
-  - *Salvia x superba* 'Mainacht' - 9 .
-  - *Euphorbia polychroma* - 2 .
-  - *Nepeta x faassenii* 'Walkers Low' - 14 .
-  - *Calamintha grandiflora* - 7 .
-  - *Bergenia cordifolia* 'Winterglut' - 9 .
-  - *Heuchera x hybrida* 'Prince of Silver'® - 8 .
- - *Campanula persicifolia* Grandiflora 'Alba' - 16 .
- - *Verbena bonarensis* (viengad ga) - 11 .
- - *Clematis* - 2 .